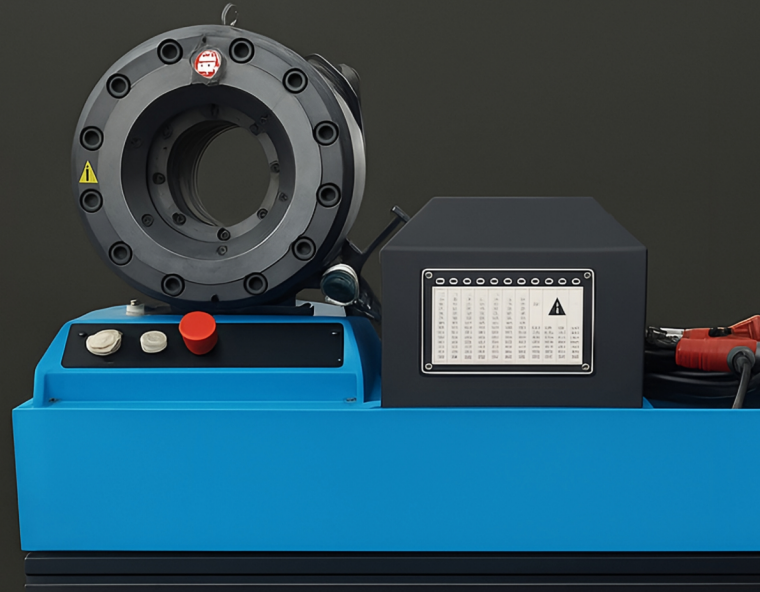




ALAWAIEL

HYDROMECHANICAL EQUIPMENT

Hydraulic Solutions That Last



ALAWAIEL

HYDROMECHANICAL
EQUIPMENT

Industrial Area 3, Sharjah UAE

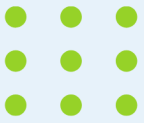
Email : Manager@alawaielhoses.ae

Email : alawaiel.hydro@gmail.com

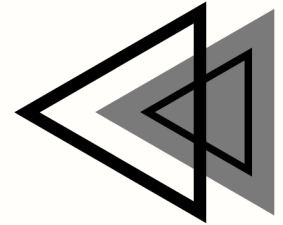
www.alawaielhoses.ae

About Us

Al Awaiel Hydromechanical Equipment is a UAE-based supplier specializing in hydraulic components. Our mission is to provide reliable, durable, and innovative hydraulic solutions that support industries worldwide. Our vision is to be the trusted global partner for hydraulic equipment and solutions.



Our product



Hydraulic Hoses

High-pressure, flexible, and long-lasting hoses.



Fittings & Adapters

Precision-engineered connections for leak-free performance.



Excavator Jack Hammers

Durable hammer heads for demolition and construction



Crimping Machines for Hydraulic Hoses

Efficient machines for precision hose assembly.



Why choose us



EXPERTISE

Years of experience
in the hydraulic
industry



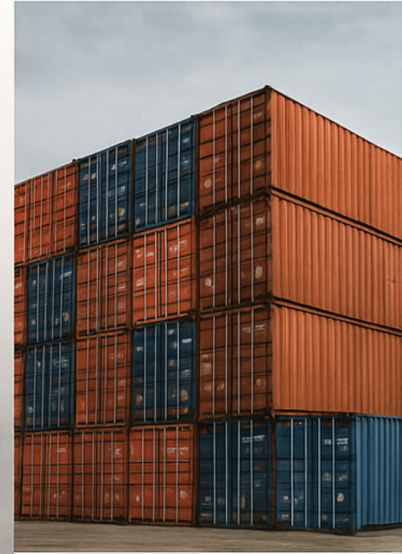
QUALITY PRODUCTS

High-performance
products built
to last



CUSTOMER FOCUS

Committed to service
and customer
satisfaction



GLOBAL REACH

Serving clients across
multiple countries



Contact us

Address : Industrial Area 3 , Sharjah UAE

Phone: +971 52 845 5224

Email: alawaiel.hydro@gmail.com

Manager@alawaielhoses.ae

Website : www.alawaielhoses.ae

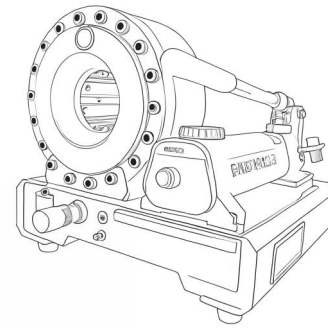




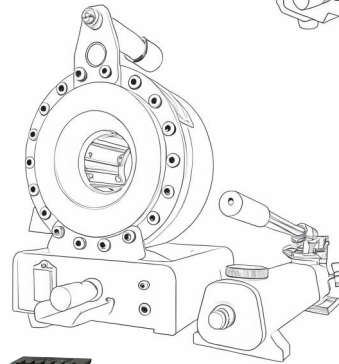
CONTENT

TYPE	PAGE NUMBER
P16HP	1
P16HPZ	
P16AP	
P20 SERIES	2
P32A	3
P32B	4
P32S	5
P32C	6
P140C	7
P20DCA/P32DCA	8
P20DCB/P32DCB	9
P20DCC/P32DCC	10
C250A	11
C300A	12
C350A	13
S51A	14

P16HP

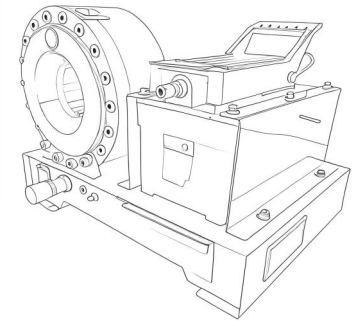


P16HPZ



P16HP/P16HPZ/P16AP is hand pump operated hydraulic crimping machine for repair workshops and field use. Easy to use, light and compact in size, allowing to be carried to any location.

P16AP



CONTROL

Manual

TECHNICAL DATA

Max crimping dia (mm)	10-45
Max crimping dia (inches)	0.39-1.77
Max. crimping force (kN)	955
Max. crimping force (Tonnage)	95
Cycle time 10 mm (s)	—
Hose size ID (inches)	1
Dies set series	P16
Max. opening (mm)	+20
Max. opening without dies (mm)	59
Master die D/L (mm)	39/64
Master die D/L (inches)	1.54/2.52
Motor Power	Hand pump

P16 Dies:

DieSet No	Crimping range	ID (mm)	L (mm)
P16/06*	6.0-8.0	6	65
P16/08*	8.0-10.0	8	65
P16/10*	10.0-12.0	10	65
P16/12*	12.0-14.0	12	65
P16/14	14.0-16.0	14	65
P16/16	16.0-19.0	16	65
P16/19	19.0-23.0	19	65
P16/23	23.0-27.0	23	65
P16/27	27.0-31.0	27	65
P16/31	31.0-38.0	31	65
P16/35	35.0-38.0	35	65

*: Non standard die

DIMENSIONS (LxWxH)

Model	Machine (mm)	Package (mm)
P16HP (mm)	380×310×210	450×350×350
P16HP (inch)	15×12.2×8.3	17.7×13.7×13.7
P16HPZ (mm)	380×310×210	450×350×350
P16HPZ (inch)	15×12.2×8.3	17.7×13.7×13.7
P16AP (mm)	370×400×290	500×420×420
P16AP (inch)	14.5×15.7×11.4	19.6×16.5×16.5

WEIGHT (KG)

P16HP N.W.	26
P16HP G.W.	35
P16HPZ N.W.	26
P16HPZ G.W.	35
P16AP N.W.	30
P16AP G.W.	38



P20 series

P20 series hose crimping machine. The oil cylinder adopts forging technology, which is sturdy and durable. It has been designed to crimp up to 1 1/4" diameter 4-spiral hoses. And for workshop use. It is fast and easy to use. There are 4 versions to choose from.

P20 Dies

DieSetNo	Crimping range	ID (mm)	L(mm)
P20/06*	6.0-8.0	6	55
P20/08*	8.0-10.0	8	55
P20/10*	10.0-12.0	10	55
P20/12*	12.0-14.0	12	55
P20/14	14.0-16.0	14	55
P20/16	16.0-19.0	16	55
P20/19	19.0-23.0	19	55
P20/23	23.0-27.0	23	55
P20/27	27.0-31.0	27	70
P20/31	31.0-36.0	31	70
P20/36	36.0-41.0	36	75
P20/41	41.0-47.0	41	75
P20/47	47.0-52.0	47	85
P20/52*	52.0-60.0	52	85

*: Non standard die

TECHNICAL DATA

Max crimping dia (mm)	10-61
Max crimping dia (inches)	0.39-2.40
Max. crimping force (kN)	1370
Max. crimping force (Tonnage)	137
Cycle time 10 mm (s)Tri/Mono	3.6
Hose size ID (inches)	11/2 (4SH)
Dies set series	P20
Max. opening (mm)	+25
Max. opening without dies (mm)	109
Master die D/L(mm)	84/80
Master die D/L(inches)	3.31/3.15
Motor (KW/HP)	3/4
Oil tank volume (L)	43
Crimping/hour	600/850
Motor Voltage (V): Tri	200/220/380/440
Motor Voltage (V): Mono	110/120/220/230/240

DIMENSIONS(LxWxH)

Machine (mm)	640x560x1350
Machine (inch)	25x22x53.1
Package (mm)	840x880x870
Package (inch)	33x34.6x34.3

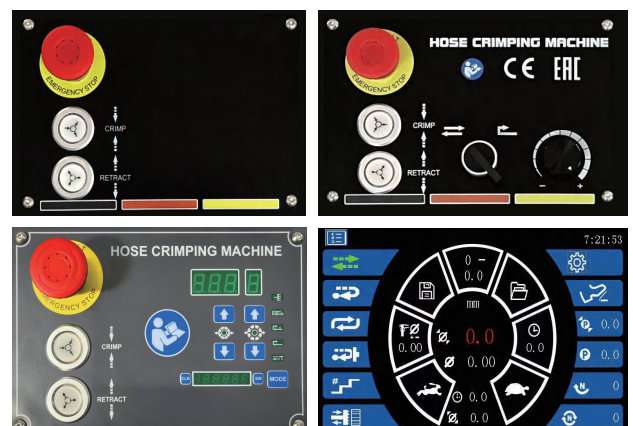
STANDARD FEATURES

- ※ QuickChange-tool
- ※ Die racks
- ※ Foot pedal

WEIGHT (KG)

N.W.	204
G.W.	227

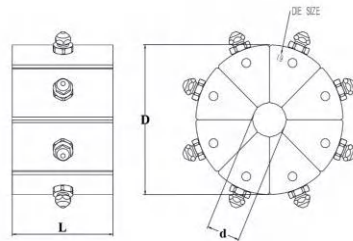
CONTROL





P32A

P32A hose-crimping machine has been designed to crimp up to 2" diameter 4-spiral hoses. The oil cylinder adopts forging technology, which is sturdy and durable.



TECHNICAL DATA

Max crimping dia (mm)	10-87
Max crimping dia (inches)	0.39-3.42
Max. crimping force (kN)	2000
Max. crimping force (Tonnage)	200
Cycle time 10 mm (s) Tri/Mono	3.3/5.5
Hose size ID (inches)	2
Dies set series	P32
Max. opening (mm)	+33
Max. opening without dies (mm)	132
Master die D/L (mm)	99/80
Master die D/L (inches)	3.90/3.15
Motor (KW/HP)	4/5.5
Oil tank volume (L)	43
Crimping/hour	700/850
Motor Voltage (V): Tri	200/220/380/440
Motor Voltage (V): Mono	110/115/220/230/240

DIMENSIONS (LxWxH)

Machine (mm)	700x560x1400
Machine (inch)	27.5x22x55.1
Package (mm)	840x880x870
Package (inch)	33x64.6x34.2

STANDARD FEATURES

- ※ QuickChange-tool
- ※ Die racks
- ※ Foot pedal

CONTROL

※ MANUAL MODE

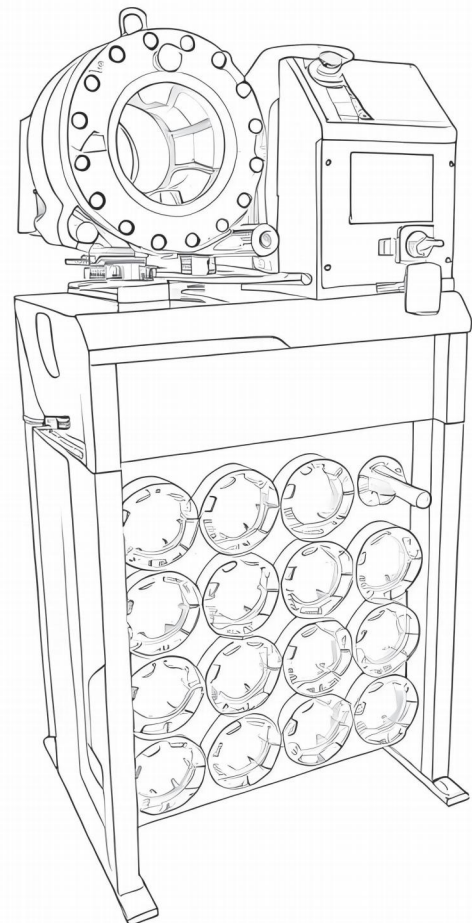
WEIGHT (KG)

N.W.	286
G.W.	310

P32 Dies:

DieSet No	Crimping range	ID (mm)	L (mm)
P32/06*	6.0-8.0	6	55
P32/08*	8.0-10.0	8	55
P32/10*	10.0-12.0	10	55
P32/12*	12.0-14.0	12	55
P32/14	14.0-16.0	14	55
P32/16	16.0-19.0	16	55
P32/19	19.0-22.0	19	55
P32/22	22.0-26.0	22	70
P32/26	26.0-30.0	26	70
P32/30	30.0-34.0	30	70
P32/34	34.0-39.0	34	75
P32/39	39.0-45.0	39	75
P32/45	45.0-51.0	45	90
P32/51	51.0-57.0	51	90
P32/57	57.0-63.0	57	100
P32/63	63.0-69.0	63	100
P32/69	69.0-75.0	69	100
P32/74*	74.0-80.0	74	100
P32/78*	78.0-87.0	78	100

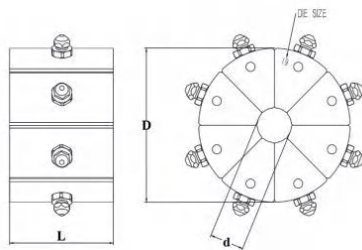
*: Non standard die





P32B

P32B hose-crimping machine has been designed to crimp up to 2" diameter 4-spiral hoses. The oil cylinder adopts forging technology, which is sturdy and durable. Add semi-automatic function and open size adjustment function. Very suitable for factory mass production needs.



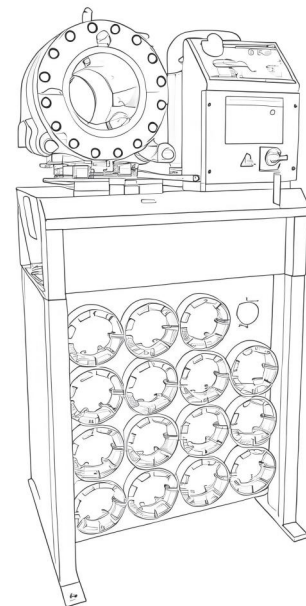
P32 Dies:

DieSet No	Crimping range	ID (mm)	L(mm)
P32/06*	6.0-8.0	6	55
P32/08*	8.0-10.0	8	55
P32/10*	10.0-12.0	10	55
P32/12*	12.0-14.0	12	55
P32/14	14.0-16.0	14	55
P32/16	16.0-19.0	16	55
P32/19	19.0-22.0	19	55
P32/22	22.0-26.0	22	70
P32/26	26.0-30.0	26	70
P32/30	30.0-34.0	30	70
P32/34	34.0-39.0	34	75
P32/39	39.0-45.0	39	75
P32/45	45.0-51.0	45	90
P32/51	51.0-57.0	51	90
P32/57	57.0-63.0	57	100
P32/63	63.0-69.0	63	100
P32/69	69.0-75.0	69	100
P32/74*	74.0-80.0	74	100
P32/78*	78.0-87.0	78	100

*: Non standard die

TECHNICAL DATA

Max crimping dia (mm)	10-87
Max crimping dia (inches)	0.39-3.42
Max. crimping force (kN)	2000
Max.crimping force (Tonnage)	200
Cycle time 10 mm (s)Tri/Mono	3.3/5.5
Hose size ID (inches)	2
Dies set series	P32
Max. opening (mm)	+33
Max.opening without dies (mm)	132
Master die D/L(mm)	99/80
Master die D/L(inches)	3.90/3.15
Motor (KW/HP)	4/5.5
Oil tank volume (L)	43
Crimping/hour	700/850
Motor Voltage (V): Tri	200/220/380/440
Motor Voltage (V):Mono	110/115/220/230/240



DIMENSIONS(LxWxH)

Machine (mm)	700x560X1400
Machine (inch)	27.5X22x55.1
Package (mm)	840x880X870
Package (inch)	33x64.6x34.2

STANARD FEATURES

- ※ QuickChange-tool
- ※ Die racks
- ※ Foot pedal

WEIGHT (KG)

N.W.	286
G.W.	310

CONTROL

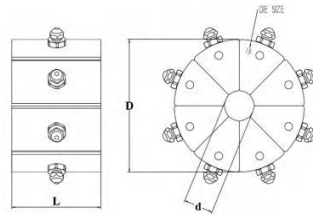
- ※ MANUAL MODE
- ※ SEMI-AUTOMATIC MODE
- ※ OPEN SIZE





P32S

P32S hose-crimping machine has been designed to crimp up to 2" diameter 4-spiral hoses. The oil cylinder adopts forging technology, which is sturdy and durable. There are 5 working modes to choose from. Added counting function.



TECHNICAL DATA

Max crimping dia (mm)	10-87
Max crimping dia (inches)	0.39-3.42
Max. crimping force (kN)	2000
Max. crimping force (Tonnage)	200
Cycle time 10 mm (s) Tri/Mono	3.3/5.5
Hose size ID (inches)	2
Dies set series	P32
Max. opening (mm)	+33
Max. opening without dies (mm)	132
Master die D/L (mm)	99/80
Master die D/L (inches)	3.90/3.15
Motor (KW/HP)	4/5.5
Oil tank volume (L)	43
Crimping/hour	700/850
Motor Voltage (V): Tri	200/220/380/440
Motor Voltage (V): Mono	110/115/220/230/240

DIMENSIONS (LxWxH)

Machine (mm)	700x560x1400	Package (mm)	840x880x870
Machine (inch)	27.5x22x55.1	Package (inch)	33x64.6x34.2

STANDARD FEATURES

※ QuickChange-tool
※ Die racks
※ Foot pedal

WEIGHT (KG)

N.W.	286
G.W.	310

P32 Dies:

DieSet No	Crimping range	ID (mm)	L (mm)
P32/06*	6.0-8.0	6	55
P32/08*	8.0-10.0	8	55
P32/10*	10.0-12.0	10	55
P32/12*	12.0-14.0	12	55
P32/14	14.0-16.0	14	55
P32/16	16.0-19.0	16	55
P32/19	19.0-22.0	19	55
P32/22	22.0-26.0	22	70
P32/26	26.0-30.0	26	70
P32/30	30.0-34.0	30	70
P32/34	34.0-39.0	34	75
P32/39	39.0-45.0	39	75
P32/45	45.0-51.0	45	90
P32/51	51.0-57.0	51	90
P32/57	57.0-63.0	57	100
P32/63	63.0-69.0	63	100
P32/69	69.0-75.0	69	100
P32/74*	74.0-80.0	74	100
P32/78*	78.0-87.0	78	100

*: Non standard die

CONTROL

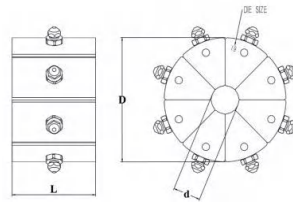
MANUAL MODE	TOTAL NUMBER OF RUNS
SEMI-AUTOMATIC MODE	COUNTING FUNCTION
TIME DELAY MODE	CRIMPING DIA METER
FOOT PEDAL MODE	OPEN SIZE
QUICK CHANGE MODE	





P32C

P32C hose-crimping machine has been designed to crimp up to 2" diameter 4-spiral hoses. The oil cylinder adopts forging technology, which is sturdy and durable. Equipped with intelligent control system, it has multiple working modes and memory functions. It is an ideal model for large-scale production in factories.



TECHNICAL DATA

Max crimping dia (mm)	10-87
Max crimping dia (inches)	0.39-3.42
Max. crimping force (kN)	2000
Max. crimping force (Tonnage)	200
Cycle time 10 mm (s) Tri/Mono	3.3/5.5
Hose size ID (inches)	2
Dies set series	P32
Max. opening (mm)	+33
Max. opening without dies (mm)	132
Master die D/L (mm)	99/80
Master die D/L (inches)	3.90/3.15
Motor (KW/HP)	4/5.5
Oil tank volume (L)	43
Crimping/hour	700/850
Motor Voltage (V): Tri	200/220/380/440
Motor Voltage (V): Mono	110/115/220/230/240

DIMENSIONS(LxWxH)

Machine (mm)	700x560x1400	Package (mm)	840x880x870
Machine (inch)	27.5x22x55.1	Package (inch)	33x64.6x34.2

STANDARD FEATURES

※ QuickChange-tool
※ Die racks
※ Foot pedal

WEIGHT (KG)

N.W.	286
G.W.	310

P32 Dies:

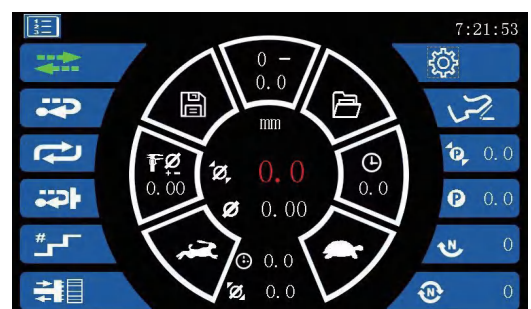
DieSet No	Crimping range	ID (mm)	L (mm)
P32/06*	6.0-8.0	6	55
P32/08*	8.0-10.0	8	55
P32/10*	10.0-12.0	10	55
P32/12*	12.0-14.0	12	55
P32/14	14.0-16.0	14	55
P32/16	16.0-19.0	16	55
P32/19	19.0-22.0	19	55
P32/22	22.0-26.0	22	70
P32/26	26.0-30.0	26	70
P32/30	30.0-34.0	30	70
P32/34	34.0-39.0	34	75
P32/39	39.0-45.0	39	75
P32/45	45.0-51.0	45	90
P32/51	51.0-57.0	51	90
P32/57	57.0-63.0	57	100
P32/63	63.0-69.0	63	100
P32/69	69.0-75.0	69	100
P32/74*	74.0-80.0	74	100
P32/78*	78.0-87.0	78	100

*: Non standard die

CONTROL

	MANUAL MODE		TOTAL NUMBER OF RUNS
	SEMI-AUTOMATIC MODE		COUNTING FUNCTION
	LOOP MODE		STORAGE
	STEP		LOAD DAT
	QUICK CHANGE MODE		CRIMPING DIAMETER
	TIME DELAY MODE		CURRENT LOCATION
	FOOT PEDAL MODE		OPEN SIZE
	CRIMPING PRESSURE		PRESSURE

AI AI RECOMMEND USING MOLDS





P140C

P140 hose crimping machine. The design conforms to ergonomics. Equipped with an intelligent operating system. has been designed to crimp up to 2 1/2" 4-spiral hoses or 4 inch industrial pipe. Max opening 222mm. P140 die system with adaptor dies suitable for lager, medium and even small size fittings.



TECHNICAL DATA

Max crimping dia (mm)	10-61
Max crimping dia (inches)	0.24-5.51
Max. crimping force (kN)	3200
Max.crimping force (Tonnage)	320
Cycle time 10 mm (s)	1.5
Hose size ID (inches) Hydraulic/Industrial	2 1/2" (4SH) /4"
Dies set series	P32&P140
Max. opening (mm)	+82
Max.opening without dies (mm)	222
Master die D/L(mm)	140/97
Master die D/L(inches)	5.51/3.82
Motor Power(KW/HP)	5.5/7.7
Oil tank volume (L)	145
Crimping/hour	2400
Motor Voltage (V): Tri	200/220/380/400/440
Motor Voltage (V):Mono	220v/110v/220v

STANDARD FEATURES

※QuickChange-tool
※Mirror
※Electric backstop device
※Die racks
※Foot pedal**

DIMENSIONS(LxWxH)

Machine (mm)	1060X750X1600
Machine(inch)	41.7X29.6X63
Station(mm)	720X720X1100
Station(inch)	28.3X28.3X43.3
Package(mm)	1100X1480X1770
Package(inch)	43.3X58.3X69.7

WEIGHT (KG)

Machine N.W.	1360
Package G.W.	1445

P32 Dies

DieSetNo	Crimping range	ID (mm)	L(mm)
P32/06*	6.0-8.0	6	55
P32/08*	8.0-10.0	8	55
P32/10*	10.0-12.0	10	55
P32/12*	12.0 -14.0	12	55
P32/14	14.0-16.0	14	55
P32/16	16.0-19.0	16	55
P32/19	19.0-22.0	19	55
P32/22	22.0-26.0	22	70
P32/26	26.0-30.0	26	70
P32/30	30.0-34.0	30	70
P32/34	34.0-39.0	34	75
P32/39	39.0-45.0	39	75
P32/45	45.0-51.0	45	90
P32/51	51.0-57.0	51	90
P32/57	57.0-63.0	57	100
P32/63	63.0-69.0	63	100
P32/69	69.0-75.0	69	100
P32/74	74.0-80.0	74	100
P32/78	78.0-87.0	78	100
DieSetNo	Crimping range	D	L
P140/84	84.0-92.0	94	110
P140/92	92.0-100.0	92	110
P140/100	100.0-108.0	100	110
P140/108	108.0-116.0	108	110
P140/116	116.0-124.0	116	110
P140/124*	124.0-132.0	124	110
P140/132*	132.0-140.0	132	110

*: Non standard die

With adapter dies



P20DCA/P32DCA

P20DCA/P32DCA hose crimping machine. The design is compact and can be used as a whole or separately. Suitable for on-site construction use.

P32DCA TECHNICAL DATA

Max crimping dia (mm)	10-87
Max crimping dia (inches)	0.39-3.42
Max. crimping force (kN)	2000
Max.crimping force (tonnage)	200
Cycle time 10 mm (s)	7.5
Hose size ID (inches)	2"(4SH) /11/2"(6SH)
Dies set series	P32
Max. opening (mm)	+33
Max.opening without dies (mm)	132
Master die D/L(mm)	99/80
Master die D/L(inches)	3.90/3.15
Motor (kW) 12V/24V:	1.6/2.25
Motor (HP)12V/24V:	2.1/3.05
Oil tank volume (L)	6
Crimping/hour	100

P20DCA TECHNICAL DATA

Max crimping dia (mm)	10-61
Max crimping dia (inches)	0.39-2.40
Max. crimping force (kN)	1370
Max.crimping force (tonnage)	137
Cycle time 10 mm (s)	7.2
Hose size ID (inches)	11/2(2SN)/11/4(4SP)
Dies set series	P20
Max. opening (mm)	+25
Max.opening without dies (mm)	109
Master die D/L(mm)	84/80
Master die D/L(inches)	3.31/3.15
Motor (kW) 12V/24V:	1.6/2.25
Motor (HP)12V/24V:	2.1/3.05
Oil tank volume (L)	6
Crimping/hour	200

DIMENSIONS(LxWxH)

Machine (mm)	870x550x520
Machine (inch)	34.3x21.6x20.5
Package (mm)	910x630x700
Package (inch)	35.8x24.8x27.6

STANARD FEATURES

※QuickChange-tool
※Die racks

WEIGHT (KG)

N.W.	153
G.W.	188

CONTROL

※Semi—Automatic

DIMENSIONS(LxWxH)

Machine (mm)	870x550x480
Machine (inch)	34.3x21.6x18.9
Package (mm)	910x630x650
Package (inch)	35.8x24.8x25.5

STANARD FEATURES

※QuickChange-tool
※Die racks

WEIGHT (KG)

Machine N.W.	125
Machine G.W.	150

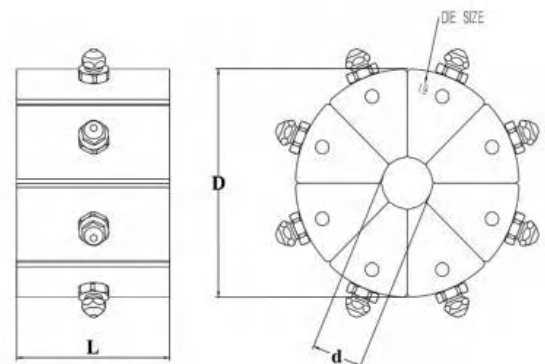
CONTROL

※Semi—Automatic

P32Dies ID(mm)

P32/6*	P32/8*	P32/10*	P32/12*	P32/14
P32/16	P32/19	P32/22	P32/26	p32/30
P32/34	P32/39	P32/45	P32/51	P32/57
P32/63	P32/69	P32/74*	P32/78*	

*: Non standard die



P20Dies ID(mm)

P20/6*	P20/8*	P20/10*	P20/12*
P20/14	P20/16	P20/19	P20/23
P20/27	P20/31	P20/36	p20/41
P20/52*	P20/57*		

*: Non standard die



P20DCB/P32DCB

P20DCB/P32DCB hose crimping machine. It can be fixed on the vehicle or disassembled into two parts. Easy to transport. Easy to operate. There are two versions: DC12V and DC24V.

P32DCB TECHNICAL DATA

Max crimping dia (mm)	10-87
Max crimping dia (inches)	0.39-3.42
Max. crimping force (kN)	2000
Max.crimping force (tonnage)	200
Cycle time 10 mm (s)	7.5
Hose size ID (inches)	2"(4SH) /11/2"(6SH)
Dies set series	P32
Max. opening (mm)	+33
Max.opening without dies (mm)	132
Master die D/L(mm)	99/80
Master die D/L(inches)	3.90/3.15
Motor (kW) 12V/24V:	1.6/2.25
Motor (HP)12V/24V:	2.1/3.05
Oil tank volume (L)	6
Crimping/hour	100

P20DCB TECHNICAL DATA

Max crimping dia (mm)	10-61
Max crimping dia (inches)	0.39-2.40
Max. crimping force (kN)	1370
Max.crimping force (tonnage)	137
Cycle time 10 mm (s)	7.2
Hose size ID (inches)	11/2(2SN)/11/4(4SP)
Dies set series	P20
Max. opening (mm)	+25
Max.opening without dies (mm)	109
Master die D/L(mm)	84/80
Master die D/L(inches)	3.31/3.15
Motor (kW) 12V/24V:	1.6/2.25
Motor (HP)12V/24V:	2.1/3.05
Oil tank volume (L)	6
Crimping/hour	200

DIMENSIONS(LxWxH)

Machine (mm)	580x660x680
Machine (inch)	34.3x26x20.5
Package (mm)	910x860x910
Package (inch)	35.8x33.9x35.8

STANARD FEATURES

※QuickChange-tool
※Die racks

CONTROL

※Semi—Automatic

WEIGHT (KG)

N.W.	175
G.W.	215

DIMENSIONS(LxWxH)

Machine (mm)	580x640x680
Machine (inch)	22.8x25.2x26.8
Package (mm)	910x860x910
Package (inch)	35.8x33.8x35.8

STANARD FEATURES

※QuickChange-tool
※Die racks

WEIGHT (KG)

Machine N.W.	145
Machine G.W.	170

CONTROL

※Semi—Automatic

P32Dies ID(mm)

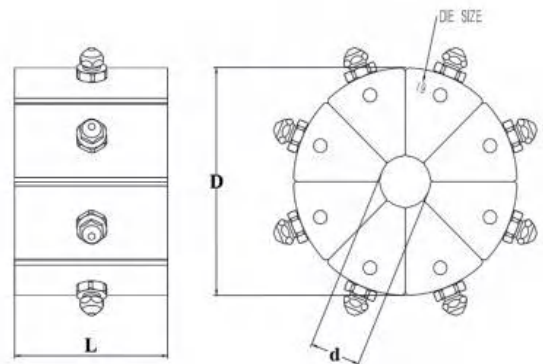
P32/6*	P32/8*	P32/10*	P32/12*	P32/14
P32/16	P32/19	P32/22	P32/26	p32/30
P32/34	P32/39	P32/45	P32/51	P32/57
P32/63	P32/69	P32/74*	P32/78*	

*: Non standard die

P20Dies ID(mm)

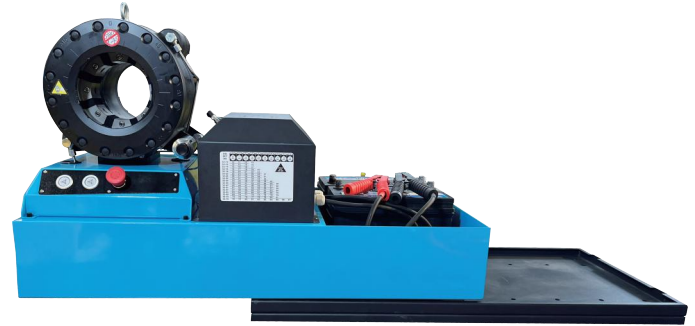
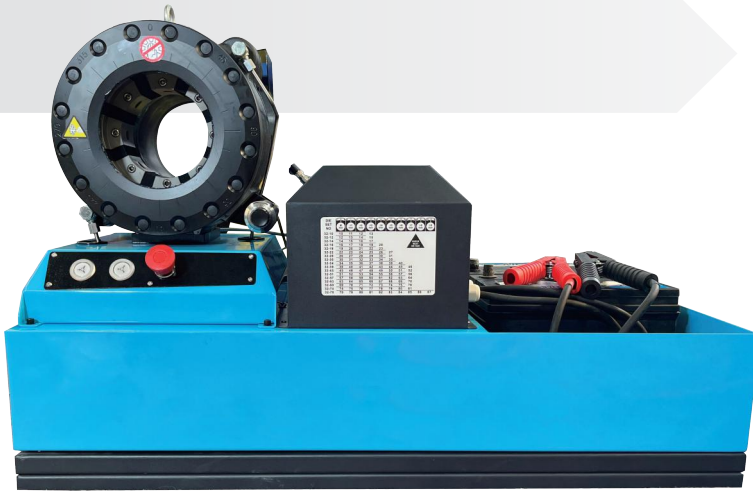
P20/6*	P20/8*	P20/10*	P20/12*
P20/14	P20/16	P20/19	P20/23
P20/27	P20/31	P20/36	p20/41
P20/52*	P20/57*		

*: Non standard die



P20DCC/P32DCC

P20DCC/P32DCC hose crimping machine. It can be fixed on the vehicle and can extend the machinery during operation. Easy to operate. Suitable for mobile assignments.



P20DCC TECHNICAL DATA

Max crimping dia (mm)	10-61
Max crimping dia (inches)	0.39-2.40
Max. crimping force (kN)	1370
Max.crimping force (tonnage)	137
Cycle time 10 mm (s)	7.2
Hose size ID (inches)	11/2(2SN)/11/4(4SP)
Dies set series	P20
Max. opening (mm)	+25
Max.opening without dies (mm)	109
Master die D/L(mm)	84/80
Master die D/L(inches)	3.31/3.15
Motor (kW) 12V/24V:	1.6/2.25
Motor (HP)12V/24V:	2.1/3.05
Oil tank volume (L)	6
Crimping/hour	200

P32DCC TECHNICAL DATA

Max crimping dia (mm)	10-87
Max crimping dia (inches)	0.39-3.42
Max. crimping force (kN)	2000
Max.crimping force (tonnage)	200
Cycle time 10 mm (s)	7.5
Hose size ID (inches)	2"(4SH) /11/2"(6SH)
Dies set series	P32
Max. opening (mm)	+33
Max.opening without dies (mm)	132
Master die D/L(mm)	99/80
Master die D/L(inches)	3.90/3.15
Motor (kW) 12V/24V:	1.6/2.25
Motor (HP)12V/24V:	2.1/3.05
Oil tank volume (L)	6
Crimping/hour	100

DIMENSIONS(LxWxH)

Machine (mm)	1050x600x600
Machine (inch)	41.3x23.3x23.3
Package (mm)	1100x750x850
Package (inch)	43.3x29.5x33.5

STANDARD FEATURES

※QuickChange-tool
※Die racks

WEIGHT (KG)

Machine N.W.	210
Machine G.W.	265

CONTROL

※Semi—Automatic

DIMENSIONS(LxWxH)

Machine (mm)	580x660x680
Machine (inch)	34.3x26x20.5
Package (mm)	910x860x910
Package (inch)	35.8x33.9x35.8

STANDARD FEATURES

※QuickChange-tool
※Die racks

WEIGHT (KG)

N.W.	175
G.W.	215

CONTROL

※Semi—Automatic

MACHINE EXTENSION SIZE

(mm):500

(inch):19.7

P20Dies ID(mm)

P20/6*	P20/8*	P20/10*	P20/12*
P20/14	P20/16	P20/19	P20/23
P20/27	P20/31	P20/36	p20/41
P20/52*	P20/57*		

*: Non standard die

MACHINE EXTENSION SIZE

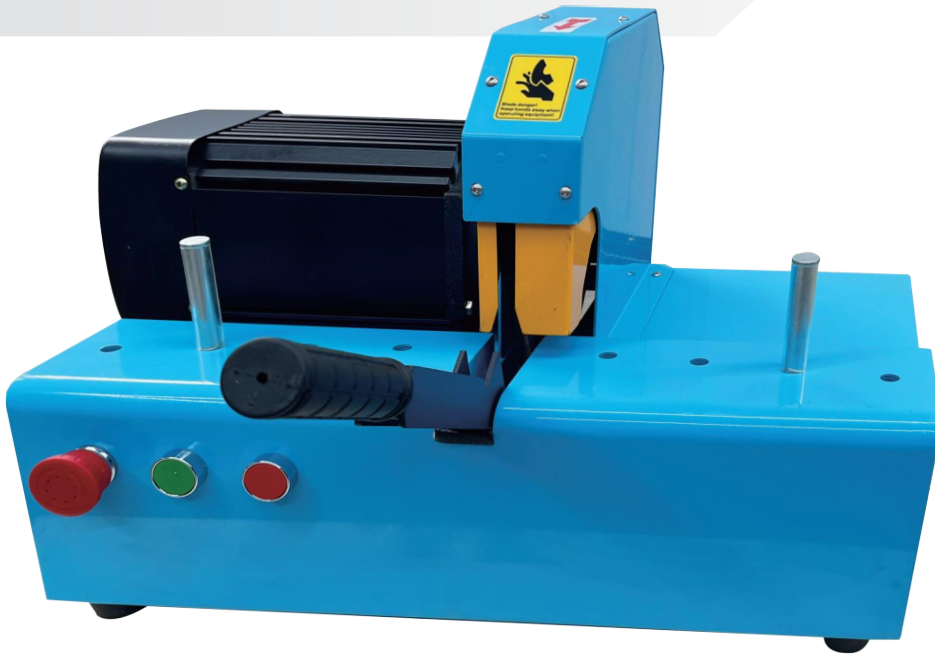
(mm):500

(inch):19.7

P32Dies ID(mm)

P32/6*	P32/8*	P32/10*	P32/12*	P32/14
P32/16	P32/19	P32/22	P32/26	p32/30
P32/34	P32/39	P32/45	P32/51	P32/57
P32/63	P32/69	P32/74*	P32/78*	

*: Non standard die



C250A

C250A hose-cutting machine has been designed to cut up to 1 1/2" diameter 4-spiral hoses.

TECHNICAL DATA

Max.hose size (inches)	1*4SH
Diameter(blade),ext.(mm)	250*25
Air power	_____
Motor(kw):3PH 380V	2.2
Velocity,50HZ(rpm)	2850

DIMENSIONS(LxWxH)

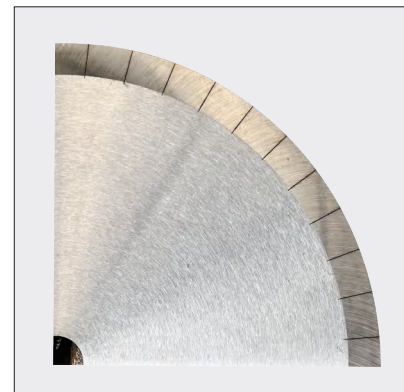
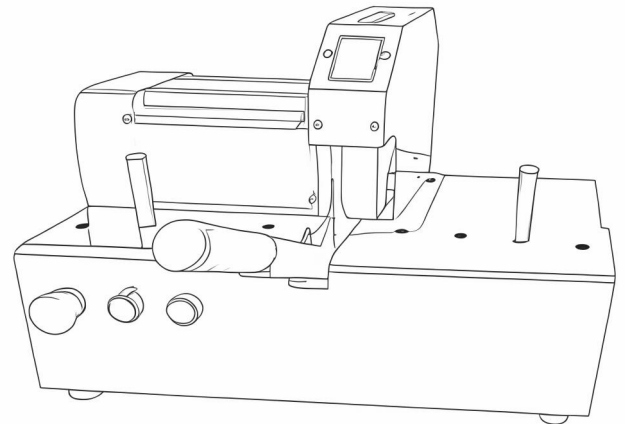
Machine (mm)	550x360x450
Machine (inch)	21.6x14.1x17.2
Package (mm)	700x580x420
Package (inch)	27.5x22.8x16.5

WEIGHT (KG)

N.W.	24
G.W.	35

OPTIONS

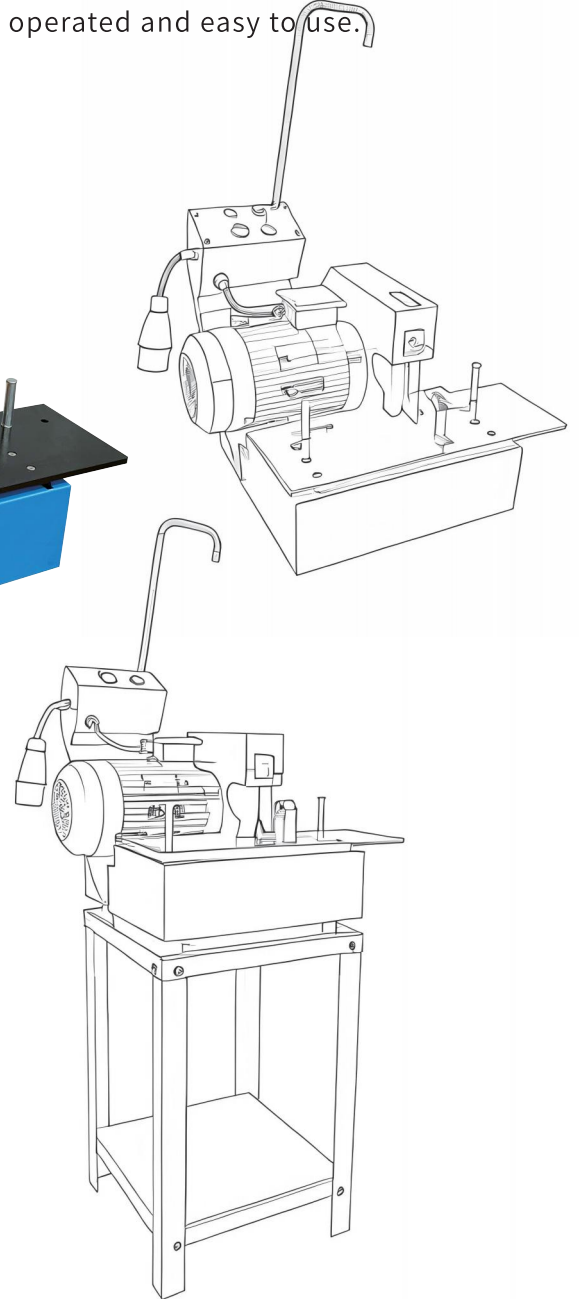
※ Toothed Blade (High-speed Steel)



C300A



C300A hose-cutting machine has been designed to cut up to 2” diameter 4-spiral hoses. And for workshop use. It is manually operated and easy to use.



TECHNICAL DATA

Max.hose size(inches)	2*4SH
Diameter(blade),ext.(mm)	300*25
Air power	_____
Motor(kW):Tri/Mono	3
Motor(HP):Tri/Mono	4
Velocity,50 HZ(rpm)	2850
Velocity,60 HZ(rpm)	3370
Motor Voltage: Tri	220V/380V
Motor Voltage: Mono	110v/220V

DIMENSIONS(LxWxH)

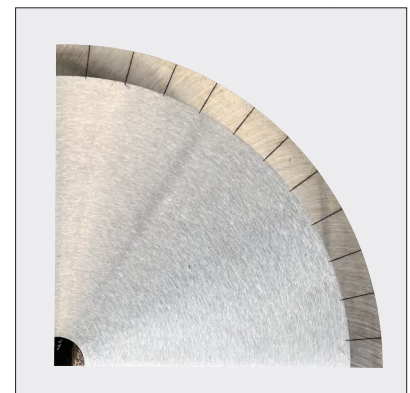
Machine (mm)	550x360x930
Machine (inch)	22.8x23.6x36.6
Package (mm)	705x625x740
Package (inch)	27.8x24.6x29.1

WEIGHT (KG)

N.W.	78
G.W.	110

OPTIONS

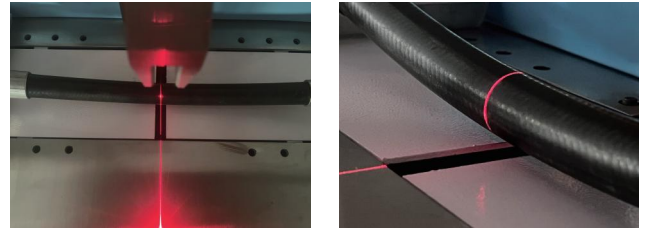
※ Toothed Blade (High-speed Steel)



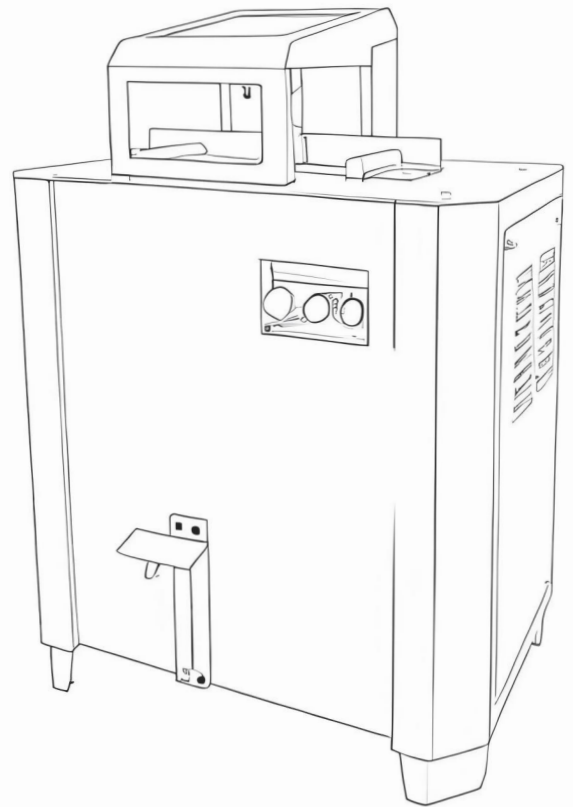
C350A



C350A Fhose-cuttingmachine has been designed to cut upto 2" diameter 4-spiral hoses.



Position display function



TECHNICAL DATA

Max.hose size(inches)	2*4SH
Diameter(blade),ext.(mm)	350*25
Air power	—
Motor(kw):TRI	3
Motor(HP):TRI	4.3
Velocity,50 HZ(rpm)	2850
Velocity,60HZ(rpm)	3370
Motor Voltage: Tri	22V/380V/400V
Motor Voltage:MORO	110/120/230/240

DIMENSIONS(LxWxH)

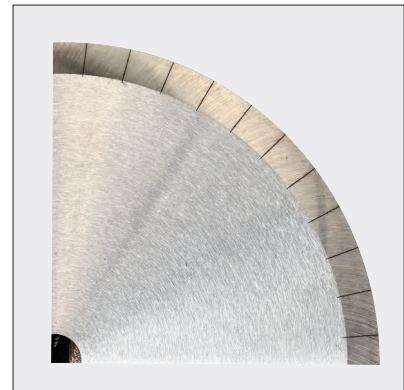
Machine (mm)	600x540x1100
Machine (inch)	23.6x21.3x43.3
Package (mm)	610x610x1250
Package (inch)	24x24x49.2

WEIGHT (KG)

N.W.	115
G.W.	125

OPTIONS

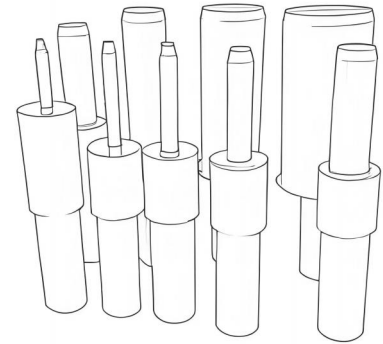
※Toothed Blade (High-speed Steel)



S51A



S51A hose-skiving machine has been designed to skive hydraulic hoses from diameter 3/16" to 2". For workshop use.



TECHNICAL DATA

Hose capacity, external inch	1/4"-2"
Hose capacity, internal inch	3/4"-2"
Electric motor(kw)	0.4kw
Speed of toolrotation	190r/min
Motor Voltage(V):Tri	200/220/380
Motor Voltage (V):Mono	220/230/240

DIMENSIONS(LxWxH)

Machine (mm)	600x540x1100
Machine (inch)	23.6x21.3x43.3
Package (mm)	610x610x1250
Package (inch)	24x24x49.2

WEIGHT (KG)

N.W.	55
G.W.	72

OPTIONS

※Easily adjustable with one screw.
※Additional waste bin
※Separate toolrack
※Single sided blade holder

STANDARD SKIVING KIT

External(inch)	1/4
	5/16
	3/8
	1/2
	5/8
External&Internal(inch)	3/4
	1
	1 1/4
	1 1/2
	2